

HIGH VOLTAGE POWER CAPACITORS

KL_V



SINGLE-PHASE CAPACITORS



THREE-PHASE CAPACITORS



SINGLE-PHASE WITH TWO OUTPUTS - TWIN CAPACITORS

GENERAL

ADVANCED TECHNOLOGY OF KL_V CAPACITORS IS **BASED ON CONSTRUCTION OF ALL-FILM CAPACITOR SECTIONS, FOLDING FOIL EDGE DESIGN, IMPROVED ELECTRICAL AND MECHANICAL CONNECTIONS BETWEEN SECTIONS AND IMPREGNATION WITH ENVIRONMENTALLY COMPATIBLE INSULATING OIL**. KL_V CAPACITORS HAVE **VERY LOW DIELECTRIC LOSSES** AND ARE DESIGNED FOR **LONG SERVICE LIFE**.

- KL_V3xxx - INTERNALLY FUSED CAPACITORS. **EACH CAPACITOR ELEMENT HAS A SEPARATE INTERNAL FUSE.**
- KL_V1xxx - CAPACITORS **WITHOUT INTERNAL FUSES**
- KL_Vxxx4 - **SINGLE PHASE CAPACITORS WITH TWO OUTPUTS (TWIN)**. CAPACITORS ARE SUPPLIED IN SETS OF THREE TO PROVIDE AN ECONOMICAL UNBALANCE DETECTION SCHEME. THIS IS PARTICULARLY ADVANTAGEOUS IN LOW OUTPUT CAPACITOR BANKS.

TECHNICAL DATA

RATED POWER (MAX.):	600 kVAR, 50 Hz ; 720 kVAR, 60 Hz
RATED VOLTAGE:	1.0 - 20 KV
RATED FREQUENCY:	50 OR 60 Hz
LOSSES TOTAL:	MAX. 0.2 W/kVAR (0.08...0.15 AVERAGE)
DIELECTRIC:	ALL-FILM (HAZY POLYPROPYLENE)
IMPREGNATING FLUID:	ENVIRONMENTALLY COMPATIBLE IMPREGNATING OIL BASED ON M/DBT (NON - PCB)
DISCHARGE RESISTOR:	BUILT IN DISCHARGE RESISTOR REDUCES THE VOLTAGE ON A DE-ENERGISED CAPACITOR FROM THE CREST OF RATED VOLTAGE TO 75 V IN 10 MINUTES OR LESS (DISCHARGE TO 50 V IN 5 MINUTES ON DEMAND).
PERMISSIBLE OVERLOADS:	MAXIMUM PERMISSIBLE CURRENT $1,3 \times I_N$ CONTINUOUSLY MAXIMUM PERMISSIBLE VOLTAGE $1,1 \times U_N$ CONTINUOUSLY, 12 H PER DAY
QUALITY:	ISKRA IS CERTIFIED ACCORDING TO ISO 9001(QUALITY) AND ISO 14001 (ENVIRONMENT)
STANDARDS:	IEC 60871-1, ANSI / IEEE 18, NEMA CP 1

HIGH VOLTAGE POWER CAPACITORS

KLV

ROUTINE TESTS

SEALING TEST:	MINIMUM OF 16 HOURS AT 75°C
VOLTAGE TEST BETWEEN TERMINALS:	2.15 x RATED VOLTAGE AC, 10 s OR 4.3 x RATED VOLTAGE DC, 10 s
AC VOLTAGE TEST BETWEEN TERMINALS AND CONTAINER:	ACCORDING TO IEC 60871-1, TABLE 3, 10 s
DISCHARGE RESISTOR TEST	
MEASUREMENT OF LOSSES (TAN δ)	

SERVICE CONDITIONS

TEMPERATURE CATEGORIES UP TO -40 /D

UPPER TEMPERATURE CATEGORY LIMIT	C	D
MAXIMUM	50	55
HIGHEST MEAN OVER 24 H	40	45
HIGHEST MEAN OVER 1 YEAR	30	35
LOW TEMPERATURE LIMIT DURING OPERATION	-25 °C OR -40 °C	

INSTALLATION:	OUTDOOR OR INDOOR
INSTALLATION ALTITUDE (ABOVE SEA LEVEL):	1000 M STANDARD, UP TO 4000 M ON DEMAND
CASE MATERIAL:	STAINLESS STEEL PLATE 1.5 MM THICK
FINISH / COLOUR:	TWO-COMPONENT DURABLE PAINTING RAL 7032 (LIGHT GREY) ON TREATED SURFACES.
FIXING:	DEPENDING ON THE HEIGHT OF CAPACITOR, CONTAINER IS EQUIPED WITH ONE OR TWO MOUNTING BRACKETS ON THE NARROWER SIDES. BRACKETS HAVE MOUNTING SLOTS 11 X 20 mm

TERMINAL & CONNECTIONS

BUSHINGS:	BROWN OR GRAY PORCELAIN BUSHINGS, WELDED TO THE CONTAINER.
THREAD OF TERMINAL STUD:	M14
CURRENT:	110 A MAX.
CONNECTIONS:	TERMINAL CLAMPS WITH PROVISION TO ACCOMMODATE ANY COMBINATION OF 2 CONDUCTORS FROM 4 mm ² SOLID TO 50 mm ² STRANDED WIRE ARE AVAILABLE ON DEMAND*. THE CAPACITOR UNIT GROUNDING IS PROVIDED BY UNPAINTED SURFACE OF MOUNTING BRACKETS.
PRESSURE SWITCH:	WITH TERMINAL CAP SUPPLIED ON DEMAND
NAME PLATE:	DURABLE PLASTIC LABEL WITH PERMANENT PRINTING

NOTE:

* TERMINAL CLAMPS 70 mm² ALSO AVAILABLE ON DEMAND

HIGH VOLTAGE POWER CAPACITORS

KLV 1xx1 AND 3xx1, SINGLE-PHASE CAPACITORS

TYPICAL DIMENSIONS

Q _n at 50 Hz (kVar)	U _n KLV 1xxx (WITHOUT INTERNALLY FUSED) (kV)			U _n KLV 3xxx (INTERNALLY FUSED) (kV)			DIMENSIONS (mm)					WEIGHT (kg)	WEIGHT* (kg)	
							A	B	B*	C	D			
											BIL 75-95 kV			BIL 125 kV
100	2.00	-	16.5 (20)	2.00	-	2.4	145	310	340	120 ^{2R}	240	315	26	28
150	2.00	-	16.5 (20)	2.00	-	4.8	145	400	430	200 ^{2R}	240	315	32	34
200	2.00	-	16.5 (20)	2.00	-	4.8	145	500	550	200 ^{2R}	240	315	39	42
250	2.27	-	16.5 (20)	2.27	-	7.2	145	600	670	200 ^{2R}	240	315	47	50
300	2.72	-	16.5 (20)	2.72	-	7.2	145	720	770	200 ^{2R}	240	315	53	56
350	3.18	-	16.5 (20)	3.18	-	9.6	145	840	870	200 ^{2R}	240	315	60	65
400	3.64	-	16.5 (20)	3.64	-	9.6	145	940	1000	200 ^{2R}	240	315	66	70
450	4.10	-	16.5 (20)	4.10	-	12	175	860	940	100 ^{4R}	240	315	75	78
500	4.56	-	16.5 (20)	4.56	-	14.4	175	920	1000	100 ^{4R}	240	315	82	89
550	5.00	-	16.5 (20)	5.00	-	14.4	190	920	970	100 ^{4R}	240	315	93	98
600	5.46	-	16.5 (20)	5.46	-	14.4	190	1000	1025	100 ^{4R}	240	315	93	98

NOTES:

* DIMENSIONS WITH AN ASTERISK (*) REFER TO INTERNALLY FUSED CAPACITORS

1) VOLTAGE IN PARENTHESIS () REFER TO ONE-BUSHING CAPACITORS ONLY

2) FOR OUTPUT AND VOLTAGE OUTSIDE THIS RANGE, PLEASE CONTACT FACTORY

3) CASE SIZES ARE TYPICAL AND ACTUAL SIZES WILL BE CONFIRMED AT THE TIME OF ORDER

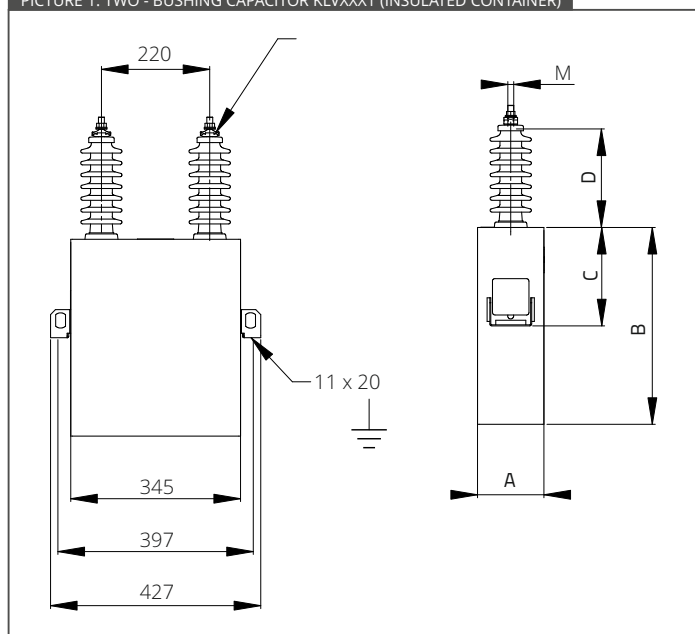
4) CAPACITOR CONTAINER COULD HAVE 2 OR 4 BRACKETS (1 OR 2 BRACKETS ON NARROWER SIDE)

DIMENSION C - 2R MEANS 1 BRACKET FROM EACH SIDE (CAPACITOR TYPE KLVXX1X); 4R MEANS 2 BRACKETS ON EACH SIDE, ONE ON THE TOP AND ONE ON THE BOTTOM, EXCEPT WHERE THE HEIGHT IS 310 MM OR BELOW, WHERE BRACKETS ARE ON THE BOTTOM ONLY (TYPE KLVXX2X).

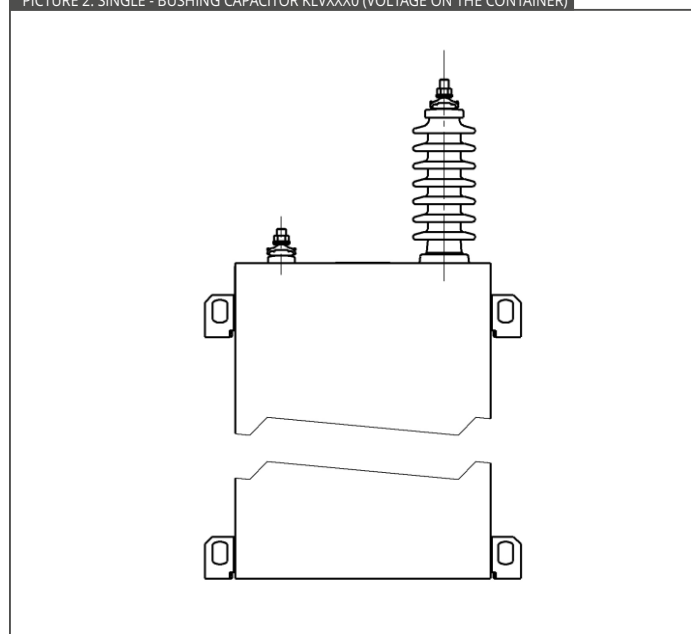
5) DIM A MAY EXPAND UP TO 115% DUE TO THERMAL FLEXURE

6) POWER AT 60 HZ = 1.2 X POWER AT 50 HZ

PICTURE 1: TWO - BUSHING CAPACITOR KLVXXX1 (INSULATED CONTAINER)



PICTURE 2: SINGLE - BUSHING CAPACITOR KLVXXX0 (VOLTAGE ON THE CONTAINER)



WHILE EVERY CARE HAS BEEN TAKEN TO ENSURE THAT THE INFORMATION CONTAINED IN THIS DOCUMENT IS CORRECT, NO RESPONSIBILITY CAN BE ACCEPTED FOR ANY INACCURACY. WE RESERVE THE RIGHT TO ALTER OR MODIFY THE INFORMATION CONTAINED HEREIN AT ANY TIME IN THE LIGHT OF TECHNICAL OR OTHER DEVELOPMENTS. TECHNICAL SPECIFICATIONS ARE VALID UNDER NORMAL OPERATING CONDITIONS ONLY. WE DO NOT ACCEPT ANY RESPONSIBILITY FOR ANY MISUSE OF THE PRODUCT AND CANNOT BE HELD LIABLE FOR INDIRECT OR CONSEQUENTIAL DAMAGES. TECHNICAL DATA AND DESIGN CAN BE SUBJECT TO CHANGE AND SHOULD BE CONFIRMED PRIOR TO ORDERING.

HIGH VOLTAGE POWER CAPACITORS

KLV 1xx3 AND 3xx3, THREE-PHASE CAPACITORS

BIL 20/60 kV

TYPICAL DIMENSIONS (PICTURE 3)								
U _n (kV)	Q _n at 50 Hz (kVar)	Dimensions (mm)					Weight (kg)	Weight* (kg)
		A	B	B*	D	E		
3.3 - 7.2	50	145	200	200	190	240	16	20
	100	145	290	325	190	240	23	26
	150	145	415	430	190	240	30	33
	200	145	520	550	190	240	37	42
	250	145	620	670	190	240	44	49
	300	145	740	770	190	240	51	55
	350	145	825	900	190	240	60	63
	400	145	940	1000	190	240	66	71
	450	175	870	960	190	240	73	78

BIL 28/75 kV

TYPICAL DIMENSIONS (PICTURE 4)								
U _n (kV)	Q _n at 50 Hz (kVar)	Dimensions (mm)					Weight (kg)	Weight* (kg)
		A	B	B*	D	E		
UP TO 12	50	145	200	200	300	510	22	23
	100	145	290	310	300	510	28	29
	150	145	400	430	300	510	35	37
	200	145	500	550	300	510	42	44
	250	145	600	670	300	510	49	51
	300	145	720	770	300	510	55	60
	350	145	825	870	300	510	63	66
	400	145	940	1000	300	510	69	75
	450	175	840	940	300	510	76	82

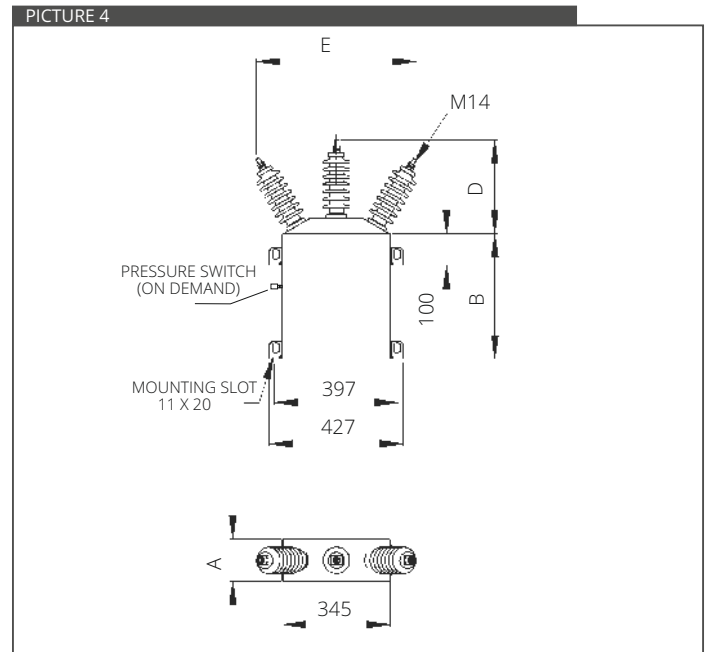
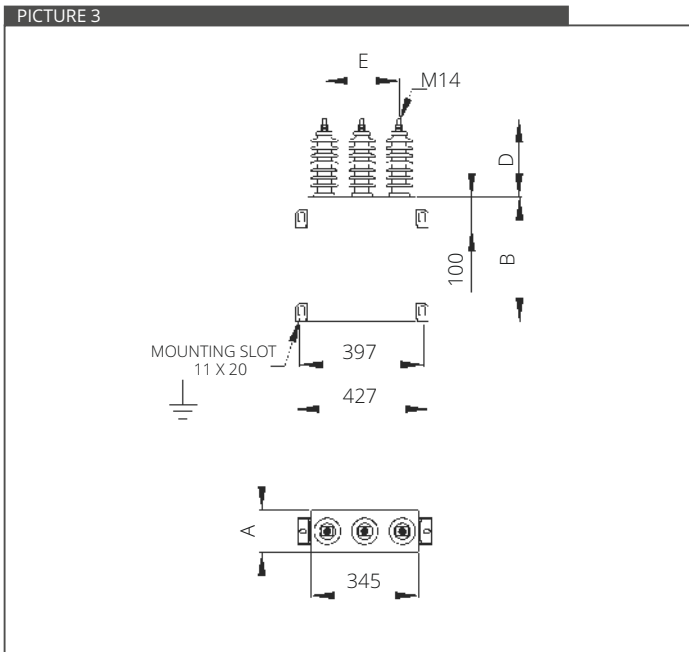
NOTES:

* DIMENSIONS WITH AN ASTERISK (*) REFER TO INTERNALLY FUSED CAPACITORS

- 1) FOR OUTPUT AND VOLTAGE OUTSIDE THIS RANGE, PLEASE CONTACT FACTORY
- 2) CASE SIZES ARE TYPICAL AND ACTUAL SIZES WILL BE CONFIRMED AT THE TIME OF ORDER
- 3) PRESSURE SWITCH ON DEMAND
- 4) EITHER 2 OR 4 FIXING BRACKETS ARE USED, DEPENDING ON THE HEIGHT OF THE UNIT. SPECIAL BRACKET POSITIONS CAN BE PROVIDED IF REQUIRED. PLEASE SPECIFY AT THE ENQUIRY STAGE.
- 5) DIM A MAY EXPAND UP TO 115 % DUE TO THERMAL FLEXURE
- 6) POWER AT 60 HZ = 1.2 x POWER AT 50 HZ

HIGH VOLTAGE POWER CAPACITORS

KLV 1xx3 AND 3xx3, THREE-PHASE CAPACITORS



WHILE EVERY CARE HAS BEEN TAKEN TO ENSURE THAT THE INFORMATION CONTAINED IN THIS DOCUMENT IS CORRECT, NO RESPONSIBILITY CAN BE ACCEPTED FOR ANY INACCURACY. WE RESERVE THE RIGHT TO ALTER OR MODIFY THE INFORMATION CONTAINED HEREIN AT ANY TIME IN THE LIGHT OF TECHNICAL OR OTHER DEVELOPMENTS. TECHNICAL SPECIFICATIONS ARE VALID UNDER NORMAL OPERATING CONDITIONS ONLY. WE DO NOT ACCEPT ANY RESPONSIBILITY FOR ANY MISUSE OF THE PRODUCT AND CANNOT BE HELD LIABLE FOR INDIRECT OR CONSEQUENTIAL DAMAGES. TECHNICAL DATA AND DESIGN CAN BE SUBJECT TO CHANGE AND SHOULD BE CONFIRMED PRIOR TO ORDERING.

HIGH VOLTAGE POWER CAPACITORS

KLV 1xx4 AND 3xx4, SINGLE-PHASE CAPACITORS WITH TWO OUTPUTS (TWIN)

BIL 20/60 kV

TYPICAL DIMENSIONS (PICTURE 5)								
U _n (kV)	Q _n at 50 Hz (kVar)	Dimensions (mm)					Weight (kg)	Weight* (kg)
		A	B	B*	D	E		
2.0 - 4.16	50 (2x25)	135	200	220	250	240	22	23
	100 (2x50)	145	290	310	250	240	28	29
	150 (2x75)	145	400	430	250	240	35	37
	200 (2x100)	145	500	550	250	240	42	44
	250 (2x125)	145	620	640	250	240	49	51
	300 (2x150)	145	720	770	250	240	51	55
	400 (2x200)	145	940	1000	250	240	66	71

BIL 28/75 kV

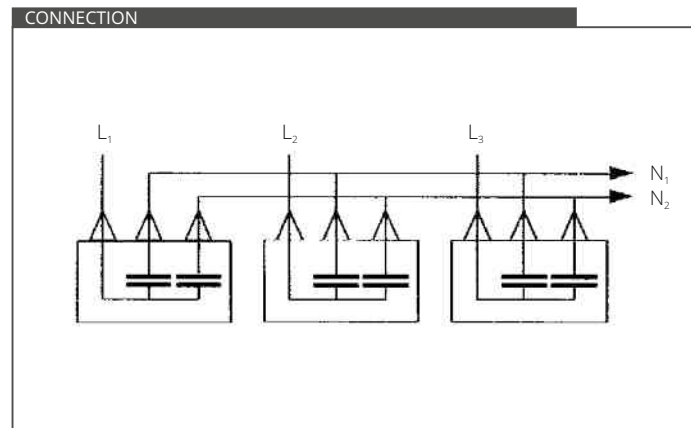
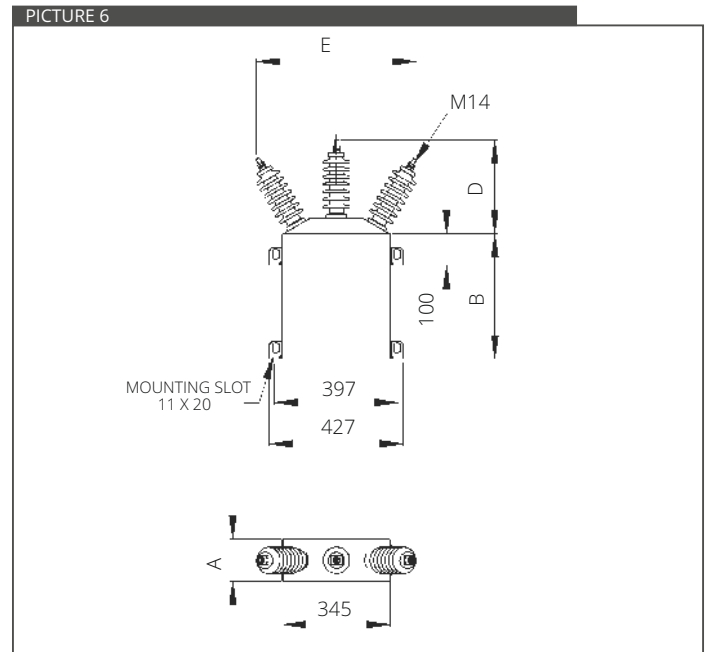
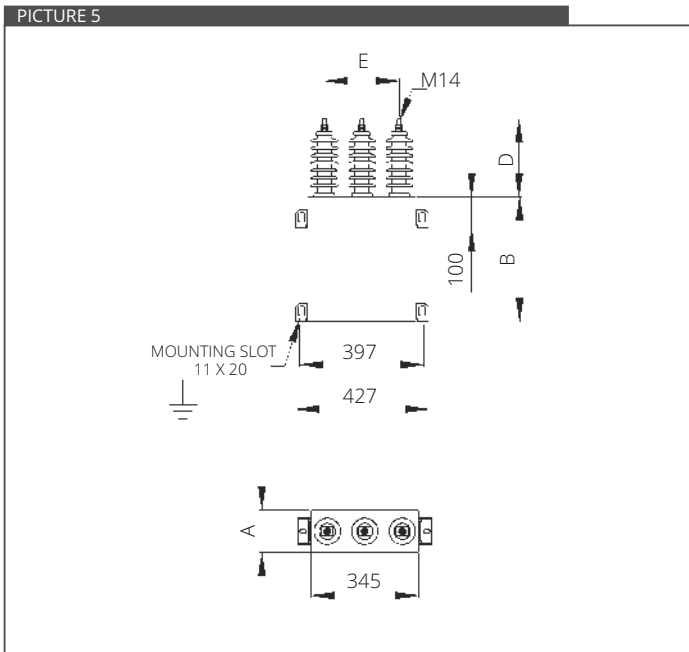
TYPICAL DIMENSIONS (PICTURE 6)								
U _n (kV)	Q _n at 50 Hz (kVar)	Dimensions (mm)					Weight (kg)	Weight* (kg)
		A	B	B*	D	E		
UP TO 6.93	50 (2x25)	145	180	200	300	510	22	23
	100 (2x50)	145	290	330	300	510	28	29
	150 (2x75)	145	400	440	300	510	35	37
	200 (2x100)	145	500	550	300	510	42	44
	250 (2x125)	145	590	670	300	510	49	51
	300 (2x150)	145	690	770	300	510	55	60
	400 (2x200)	145	900	1000	300	510	69	75

NOTES:

- * DIMENSIONS WITH AN ASTERISK (*) REFER TO INTERNALLY FUSED CAPACITORS
- 1) FOR OUTPUT AND VOLTAGE OUTSIDE THIS RANGE, PLEASE CONTACT FACTORY
- 2) CASE SIZES ARE TYPICAL AND ACTUAL SIZES WILL BE CONFIRMED AT THE TIME OF ORDER
- 3) EITHER 2 OR 4 FIXING BRACKETS ARE USED, DEPENDING ON THE HEIGHT OF THE UNIT. SPECIAL BRACKET POSITIONS CAN BE PROVIDED IF REQUIRED. PLEASE SPECIFY AT THE ENQUIRY STAGE.4) DIM A MAY EXPAND UP TO 115 % DUE TO THERMAL FLEXURE
- 5) POWER AT 60 HZ = 1.2 x POWER AT 50 HZ

HIGH VOLTAGE POWER CAPACITORS

KLV 1xx4 AND 3xx4, SINGLE-PHASE CAPACITORS WITH TWO OUTPUTS (TWIN)



WHILE EVERY CARE HAS BEEN TAKEN TO ENSURE THAT THE INFORMATION CONTAINED IN THIS DOCUMENT IS CORRECT, NO RESPONSIBILITY CAN BE ACCEPTED FOR ANY INACCURACY. WE RESERVE THE RIGHT TO ALTER OR MODIFY THE INFORMATION CONTAINED HEREIN AT ANY TIME IN THE LIGHT OF TECHNICAL OR OTHER DEVELOPMENTS. TECHNICAL SPECIFICATIONS ARE VALID UNDER NORMAL OPERATING CONDITIONS ONLY. WE DO NOT ACCEPT ANY RESPONSIBILITY FOR ANY MISUSE OF THE PRODUCT AND CANNOT BE HELD LIABLE FOR INDIRECT OR CONSEQUENTIAL DAMAGES. TECHNICAL DATA AND DESIGN CAN BE SUBJECT TO CHANGE AND SHOULD BE CONFIRMED PRIOR TO ORDERING.

HIGH VOLTAGE POWER CAPACITORS

KLV

ORDERING DATA

TYPE DESIGNATION DATA:

A1 A2 A3 A4 A5-A6 A7

K

DIELECTRIC

APPLICATION

INTERNAL DEVICES

CASE MATERIAL AND FINISH

NUMBER OF TERMINALS, CONNECTION

A1	K	CAPACITOR
A2	L	DIELECTRIC POLYPROPYLENE (ALL-FILM)
A3	V	HIGH VOLTAGE CAPACITOR FOR POWER FACTOR CORRECTION
A4	1	DISCHARGE RESISTOR BUILT IN
	2	WITHOUT DISCHARGE RESISTORS
	3	INTERNAL FUSES AND DISCHARGE RESISTORS BUILT IN
	4	INTERNAL FUSES BUILT IN
A5	0	ORDINARY STEEL CASE COATED WITH PRIMER AND TOP COAT (INTENDED FOR INDOOR INSTALLATION)
	2	STAINLESS STEEL CASE COATED WITH PRIMER AND TOP COAT (INTENDED FOR OUTDOOR AND AGGRESSIVE ATMOSPHERE INSTALLATION)
A6	1	CASE SIDE MOUNTING (2 BRACKETS)
	2	CASE SIDE MOUNTING (2 BRACKETS ON THE TOP AND / OR 2 BRACKETS ON THE BOTTOM)
A7	0	SINGLE PHASE, ONE BUSHING CAPACITOR
	1	SINGLE-PHASE, TWO BUSHING CAPACITOR
	3	THREE PHASE CAPACITOR
	4	SINGLE PHASE CAPACITOR WITH TWO OUTPUTS

WHEN ORDERING, PLEASE STATE:

RATED OUTPUT	kVar
RATED VOLTAGE	V
RATED FREQUENCY	Hz
TOLERANCE OF CAPACITANCE	-...% / +...%
NUMBER OF BUSHINGS	SINGLE BUSHING, TWO BUSHINGS...
INSTALLATION	INDOOR/OUTDOOR
INSULATION LEVEL	.../...kV, IF HIGHER THAN REQUIRED BY U
INTERNAL FUSES	YES/NO
PRESSURE SWITCH	YES/NO
TERMINAL CLAMPS	YES/NO

WHILE EVERY CARE IS TAKEN TO ENSURE THAT THE INFORMATION CONTAINED IN THIS PUBLICATION IS CORRECT, NO LEGAL RESPONSIBILITY CAN BE ACCEPTED FOR ANY INACCURACY. THE COMPANY RESERVES THE RIGHT TO ALTER OR MODIFY THE INFORMATION CONTAINED HEREIN AT ANY TIME IN THE LIGHT OF TECHNICAL OR OTHER DEVELOPMENTS.